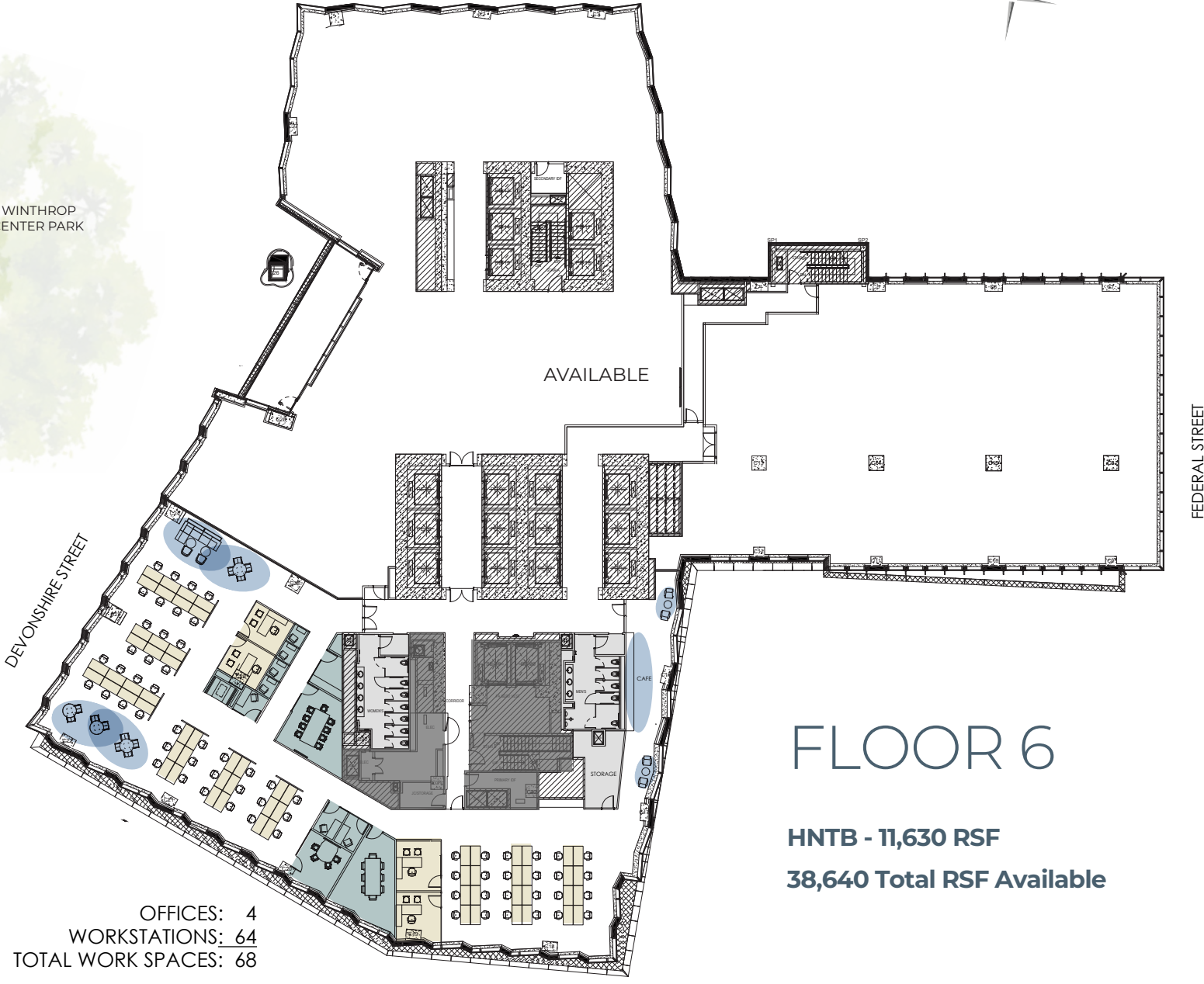


# THE OFFICES

— AT WINTHROP CENTER —



WINTHROP  
CENTER PARK



OFFICES: 4  
WORKSTATIONS: 64  
TOTAL WORK SPACES: 68

PREPARED BY MP BOSTON.

## FLOOR 6

**HNTB - 11,630 RSF**  
**38,640 Total RSF Available**

